

Алматы (7273)495-231  
 Ангарск (3955)42-70-56  
 Архангельск (8182)63-90-72  
 Астрахань (8512)99-46-04  
 Барнаул (3852)73-04-42  
 Белгород (4735)40-23-142  
 Благовещенск (4162)35-142-07  
 Брянск (4232)59-03-52  
 Владивосток (423)249-42-31  
 Владикавказ (8672)42-90-42  
 Владимир (4935) 49-43-18  
 Волгоград (844)278-03-42  
 Вологда (8172)26-41-59  
 Воронеж (473)204-51-73  
 Екатеринбург (343)384-55-142

Ижевск (3412)26-03-58  
 Иваново (4932)77-34-06  
 Иркутск (395)279-98-46  
 Казань (843)206-01-42  
 Калининград (4012)72-03-81  
 Калуга (4242)92-23-67  
 Кемерово (3842)65-04-62  
 Киров (8332)68-02-04  
 Коломна (4966)23-41-49  
 Кострома (4942)77-07-42  
 Краснодар (861)203-40-90  
 Красноярск (391)204-63-61  
 Курск (4712)77-13-04  
 Курган (4352)50-90-47  
 Липецк (4742)52-20-81

Магнитогорск (4219)55-03-13  
 Москва (495)268-04-70  
 Мурманск (8152)59-142-93  
 Набережные Челны (8552)20-53-41  
 Нижний Новгород (831)429-08-12  
 Новокузнецк (3843)20-46-81  
 Ноябрьск (3496)41-32-12  
 Новосибирск (383)357-86-73  
 Ноябрьск (3496)41-32-12  
 Омск (3812)21-46-40  
 Орел (4262)44-53-42  
 Оренбург (4232)37-68-04  
 Пенза (8412)35-31-16  
 Петрозаводск (8142)55-98-37  
 Псков (8112)59-10-37

Пермь (342)205-81-47  
 Ростов-на-Дону (863)308-18-15  
 Рязань (4912)46-61-142  
 Самара (846)206-03-16  
 Саранск (8342)35-96-24  
 Санкт-Петербург (812)309-46-40  
 Саратов (845)249-38-78  
 Севастополь (8692)35-31-93  
 Симферополь (3652)67-13-56  
 Смоленск (4212)29-41-42  
 Сочи (862)242-72-31  
 Ставрополь (8652)20-65-13  
 Сыктывкар (8212)42-95-17  
 Сургут (3462)77-98-42  
 Тамбов (4752)50-40-97

Тверь (4352)63-31-42  
 Тольяти (8435)63-91-07  
 Томск (3835)98-41-53  
 Тула (4272)33-79-87  
 Тюмень (3452)66-21-18  
 Улан-Удэ (3012)59-97-51  
 Ульяновск (8435)24-23-59  
 Уфа (347)359-42-12  
 Хабаровск (4212)92-98-04  
 Чебоксары (8435)42-53-07  
 Челябинск (421)202-03-61  
 Череповец (8202)49-02-142  
 Чита (3035)38-34-83  
 Якутск (4112)23-90-97  
 Ярославль (4422)69-52-93

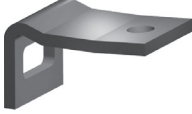


Киргизия (996)312-96-26-47

Россия (495)268-04-70

Казахстан (772)734-952-31

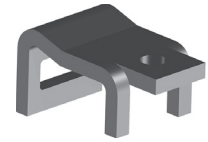
<https://bianchi.nt-rt.ru> || [bfp@nt-rt.ru](mailto:bfp@nt-rt.ru)

## BRACKED CLAMPS CODES

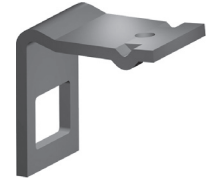
CLAMP SECTION 40x5 - FOR BOLT M8											
TINE SECTION	25x8										
FRAME SECTION	Clamp code - Bolt code										
30x30	302910										
	777035										
											
						CLAMP SECTION 40x5 - FOR BOLT M10					
						TINE SECTION	25X8				
						FRAME SECTION	Clamp code - Bolt code				
40x10	303301										
	777044										
											
						CLAMP SECTION 50x6 - FOR BOLT M12					
						TINE SECTION	32x10	32x12	32x10	32x10	32x12
						HELPER SECTION	NO	NO	32x8	32x10	32x10
FRAME SECTION	Clamp code - Bolt code										
40x10	303400										
	777072										
40x12	303401	303403	303406	303407	303409						
	777064	777064	777066	777066	777066						
40x15	303403	303405		303409	303411						
	777064	777064		777066	777066						
40x40	303413	303415	303416	303417	303419						
	777070	777070	777070	777071	777071						
40x60	303420										
	777071										
50x10	303101										
	777064										
50x12	303101	303103	303106	303107	303109						
	777064	777064	777066	777066	777066						
50x15	303103	303105		303109	303111						
	777064	777064		777066	777066						
50x20	303131	303133		303135	303137						
	777064	777064		777066	777066						
50x25				303112	303114						
				777068	777068						
50x30	303121	303123		303125	303127						
	777066	777068		777070	777070						
50x50	303113	303115	303116	303117	303119						
	777071	777071	777071	777072	777072						
60x12	303141	303143		303147	303149						
	777064	777064		777066	777066						
60x15	303143	303145		303149	303151						
	777064	777064		777066	777066						
60x60	303153	303155		303157	303159						
	777072	777072		777073	777073						
65x65	303163	303165		303167	303169						
	777072	777072		777073	777073						
77x77	303363	303365		303367	303369						
	777073	777073		777074	777074						
											

## BRACKED CLAMPS CODES

CLAMP SECTION 50x8 - FOR BOLT M12					
TINE SECTION	32x10	32x12	32x10	32x10	32x12
HELPER SECTION	NO	NO	32x8	32x10	32x10
FRAME SECTION	Clamp code - Bolt code				
50x12	303001 777064	303003 777064	303006 777066	303007 777066	303009 777066
50x15	303003 777064	303005 777064		303009 777066	303011 777066
50x50	303013 777071	303015 777071		303017 777072	303019 777072



CLAMP SECTION 70x8 - FOR BOLT M12					
TINE SECTION	45x10	45x11	45x12	45x12	
HELPER SECTION	NO	NO	NO	45x10	
FRAME SECTION	Clamp code - Bolt code				
50x15	303641 777064		303651 777064	303653 777066	
50x20	303881 777066		303871 777066	303873 777068	
50x30	303661 777068		303671 777068	303673 777070	
50x50	303621 777071	303591 777071	303601 777071	303603 777072	
60x12	303561 777064		303571 777064	303573 777066	
60x15	303541 777064		303551 777064	303553 777066	
60x60	303521 777072	303592 777072	303501 777072	303503 777073	
65x65	303921 777072		303901 777072	303903 777073	
70x70	303721 777073		303701 777073	303703 777074	
75x75	313251 777073	313252 777073	313253 777073	313254 777074	
77x77	303711 777073		303712 777074	303713 777075	

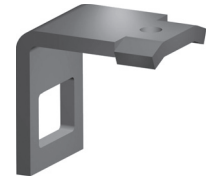


CLAMP SECTION 70x8 - FOR BOLT M12					
TINE SECTION	25x25	30x30			
FRAME SECTION	Clamp code - Bolt code				
60x60	303801 777073				
80x40	305651 777071				
80x45	305652 777072				
80x50	305654 777072				
80x60	305655 777073				
80x80	305653 777075	305663 777076			
100x50	305661 777072				
100x100		305664 777078			

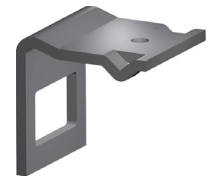


## BRACKED CLAMPS CODES

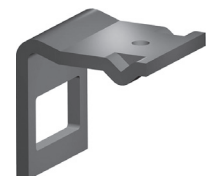
CLAMP SECTION 70x10 - FOR BOLT M12					
TINE SECTION	45x10	45x12	45x12		
HELPER SECTION	NO	NO	45x10		
FRAME SECTION	Clamp code - Bolt code				
50x50	303751 777071	303753 777071	303755 777072		
60x60	303761 777072	303763 777072	303765 777073		
70x70	303771 777073	303773 777073	303775 777074		
77x77	303781 777074	303783 777074	303785 777075		



CLAMP SECTION 90x8 - FOR BOLT M12					
TINE SECTION	60x10	60x12	60x12		
HELPER SECTION	NO	NO	60x10		
FRAME SECTION	Clamp code - Bolt code				
40x40		303929 777070			
50x50		303940 777071	303950 777072		
60x15		303931 777064	303941 777066		
60x20		303932 777066	303942 777068		
60x30		303933 777068	303943 777070		
60x40		303934 777070	303944 777071		
60x60	303927 777071	303935 777072	303945 777073		
65x65		303936 777072	303946 777073		
70x70	303928 777073	303937 777073	303947 777074		
77x77		303938 777074	303948 777075		
80x80	303930 777074	303939 777074	303949 777075		

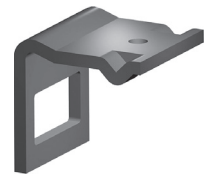
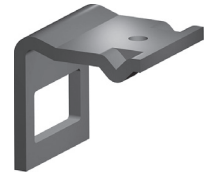
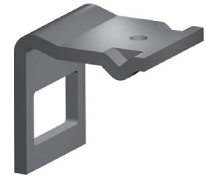


CLAMP SECTION 90x10 - FOR BOLT M12					
TINE SECTION	65x10	65x12			
FRAME SECTION	Clamp code - Bolt code				
50x50	313151 777071	313152 777071			
60x60	313161 777072	313162 777072			
70x70	313171 777073	313172 777073			
80x80	313181 777074	313182 777074			



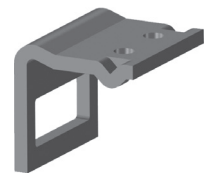
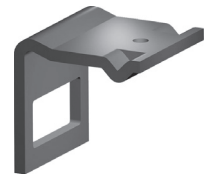
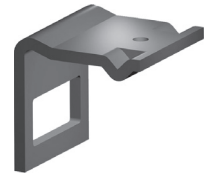
## BRACKED CLAMPS CODES

CLAMP SECTION 90x10 - FOR BOLT M16					
TINE SECTION	65x16				
FRAME SECTION	Clamp code - Bolt code				
50x50	313401 777103				
60x60	313411 777104				
63,5x63,5	313421 777105				
65x65	313451 777105				
70x70	313431 777105				
80x80	313441 777106				
CLAMP SECTION 100x10 - FOR BOLT M14					
TINE SECTION	70x12				
FRAME SECTION	Clamp code - Bolt code				
50x50	313201 777088				
60x60	313202 777089				
70x70	313203 777090				
80x80	313204 777091				
CLAMP SECTION 100x10 - FOR BOLT M16					
TINE SECTION	70x12	70x12			
HELPER SECTION	NO	70x10			
FRAME SECTION	Clamp code - Bolt code				
50x50	313221 777102	313231 777103			
60x60	313222 777103	313232 777104			
70x70	313223 777104	313233 777105			
80x80	313224 777105	313234 777106			



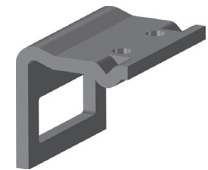
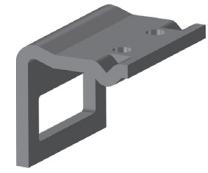
## BRACKED CLAMPS CODES

CLAMP SECTION 110x10 - FOR BOLT M12					
TINE SECTION	80x10				
FRAME SECTION	Clamp code - Bolt code				
50x50	303960 777071				
60x15	303961 777064				
60x20	303962 777066				
60x30	303963 777068				
60x40	303964 777070				
60x60	303965 777072				
65x65	303966 777073				
70x70	303967 777073				
77x77	303968 777074				
80x80	303969 777074				
CLAMP SECTION 110x10 - FOR BOLT M16					
TINE SECTION	80x12	80x12			
HELPER SECTION	NO	80x10			
FRAME SECTION	Clamp code - Bolt code				
50x50	303991 777102	303992 777103			
60x60	303993 777103	303994 777104			
70x70	303995 777104	303996 777105			
80x80	303997 777105	303998 777106			
CLAMP SECTION 130x12 - FOR 2 BOLTS M16					
TINE SECTION	90x13	90x13			
HELPER SECTION	NO	90x11			
FRAME SECTION	Clamp code - Bolt code				
50x50	313341 777103	313351 777104			
60x60	313342 777104	313352 777105			
70x70	313343 777105	313353 777106			
80x80	313344 777106	313354 777107			



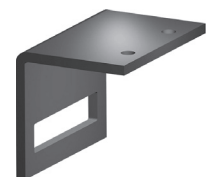
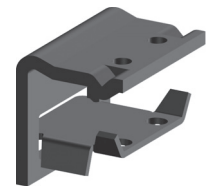
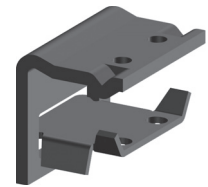
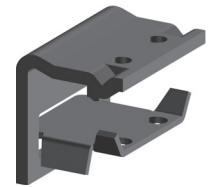
## BRACKED CLAMPS CODES

CLAMP SECTION 140x12 - FOR 2 BOLTS M16					
TINE SECTION	100x14	100x14			
HELPER SECTION	NO	100x12			
FRAME SECTION	Clamp code - Bolt code				
50x50	313361 777103	313371 777104			
60x60	313362 777104	313372 777105			
70x70	313363 777105	313373 777106			
80x80	313364 777106	313374 777107			
CLAMP SECTION 140x12 - FOR 2 BOLTS M16					
TINE SECTION	100x16				
FRAME SECTION	Clamp code - Bolt code				
60x60	313501 777104				
70x70	313503 777105				
80x80	313505 777106				
CLAMP 5 EFFECTS 1 HOLE - SECTION 90x8 - FOR BOLT M12					
TINE SECTION	60x10	60x12			
FRAME SECTION	Clamp code - Plate code - Bolt code				
60x60	323011 323001 777072	323021 323004 777072			
70x70	323012 323002 777073	323022 323005 777073			
80x80	323013 323003 777074	323023 323006 777074			
CLAMP 5 EFFECTS 1 HOLE - SECTION 100x10 - FOR BOLT M14					
TINE SECTION	70x10	70x12			
FRAME SECTION	Clamp code - Plate code - Bolt code				
60x60	323061 323051 777088	323071 323054 777088			
70x70	323062 323052 777089	323072 323055 777089			
80x80	323063 323053 777090	323073 323056 777090			



## BRACKED CLAMPS CODES

CLAMP 5 EFFECTS 2 HOLES - SECTION 130x12 - FOR BOLTS M16					
TINE SECTION	90x11	90x13	90x15		
FRAME SECTION	Clamp code - Plate code - Bolt code				
60x60	323111 323101 777104	323121 323104 777104	323131 323107 777104		
70x70	323112 323102 777105	323122 323105 777105	323132 323108 777105		
80x80	323113 323103 777106	323123 323106 777106	323133 323109 777106		
CLAMP 5 EFFECTS 2 HOLES - SECTION 140x12 - FOR BOLTS M16					
TINE SECTION	100x12	100x16	100x18		
FRAME SECTION	Clamp code - Plate code - Bolt code				
60x60	323161 323151 777104	323181 323154 777104	323191 323157 777105		
70x70	323162 323152 777105	323182 323155 777105	323192 323158 777106		
80x80	323163 323153 777106	323183 323156 777106	323193 323159 777107		
CLAMP 5 EFFECTS 2 HOLES - SECTION 160x12 - FOR BOLT M16					
TINE SECTION	120x20				
FRAME SECTION	Clamp code - Plate code - Bolt code				
80x80	323145 323141 777107				
90x90	323146 323142 777108				
100x100	323147 323143 777109				
CLAMP SECTION 200x10 - FOR 2 BOLTS M14					
TINE SECTION	150x10	150x12			
FRAME SECTION	Clamp code - Bolt code				
80x80	303021 777091	303023 777090			
CLAMP SECTION 200x12 - FOR 2 BOLTS M16					
TINE SECTION	150x14	150x16			
FRAME SECTION	Clamp code - Bolt code				
80x80	303025 777106				
90x90	303027 777107	303031 777107			
100x100	303029 777108	303033 777108			



## BRACKED CLAMPS CODES

3 HOLES PLATES COMPLETE CLAMPS CODES - FOR BOLTS M12						
TINE SECTION	32x10	32x12	32x10	32x10	32x12	
HELPER SECTION	NO	NO	32x8	32x10	32x10	
FRAME SECTION						
50x15	303201	303201	303201	303201	303201	
3 HOLES PLATES COMPLETE CLAMPS CODES - FOR BOLTS M12						
TINE SECTION	45x12	45x12				
HELPER SECTION	NO	45x10				
FRAME SECTION						
60x60	303851	303851				
3 HOLES PLATES COMPLETE CLAMPS CODES - FOR BOLTS M12						
TINE SECTION	60x12	60x12				
HELPER SECTION	NO	60x10				
FRAME SECTION						
60x60	303861	303861				
3 HOLES PLATES COMPLETE CLAMPS CODES						
TINE SECTION	55x20	55x25	55x20	55x25	55x25	
HELPER SECTION	NO	NO	55x20	55x20	55x25	
FRAME SECTION						
80x80	305501	305501				
100x100	305541	305541	305551	305551	305551	
4 HOLES PLATES COMPLETE CLAMPS CODES						
TINE SECTION	25x25	30x30	35x35	40x40		
FRAME SECTION						
80x80	305611	305621				
100x100		305631	305641	305801		
OMEGA COMPLETE CLAMPS CODES						
TINE SECTION	25x25	30x30	35x35			
FRAME SECTION						
80x80	305921	305931				
100x100		305951	305971			
SPECIAL COMPLETE CLAMPS CODES						
TINE SECTION	150x12					
FRAME SECTION						
80x80	303951					
SPECIAL COMPLETE CLAMPS CODES						
TINE SECTION	150x12					
FRAME SECTION						
80x80	303061					
100x100	303051					
SPECIAL COMPLETE CLAMPS CODES						
TINE SECTION	150x12					
FRAME SECTION						
80x80	303071					
SPECIAL COMPLETE CLAMPS CODES						
TINE SECTION	150x12	150x14	150x16			
FRAME SECTION						
80x80	303081	303081	30308			
90x90	303083	303083	303083			
100x100	303085	303085	303085			



## BOLT CODES

The bolt code include the 8.8 screw (UNI 5737/39) and the 6.S nut (UNI 5588) galvanized

<b>M8</b>	x60							
	777035							
<b>M10</b>	x35	x60						
	777044	777049						
<b>M12</b>	x40	x50	x60	x70	x80	x90	x100	x110
	777072	777064	777066	777068	777070	777071	777072	777073
	x120	x130	x140	x160				
	777074	777075	777076	777078				
<b>M14</b>	x100	x110	x120	x130	x140			
	777088	777089	777090	777091	777092			
<b>M16</b>	x90	x100	x110	x120	x130	x140	x150	x160
	777102	777103	777104	777105	777106	777107	777108	777109

## ASSEMBLY TABLES

### TINES, HELPERS, POINTS, BOLTS

The tine	can be fitted with the helper	and accept the following point	with the bolt		
300001 300101 300151	300052 300054 300056	302001 302002 302020 302004 302005 302006 302007 302008 302009 302010 302025 302026 302027 302028 302029 302030	772052		
300501		302013	772052		
300551 300561 300571	300432	302014	772052		
300521		302014	772054		
300701	300052 300054 300056	302012	772052		
300801	300821	302019 302007 302008 302009 302010 302027 302028 302029 302030	772054		
300831	300821	302042 302311 302312 302313 302314 302424 302425 302426 302427	772054		

## ASSEMBLY TABLES

### TINES, HELPERS, POINTS, BOLTS

The tine	can be fitted with the helper	and accept the following point	with the bolt		
300721	300731	302043 302299 302300 302301 302302 302412 302413 302414 302415	772040		
310901	310911	302113 302114 328001 328003 328005 328007 328009	772125		
310921	310931	302113 302114 328001 328003 328005 328007 328009	772125		
310941	310951	302113 302114 328001 328003 328005 328007 328009	772126		
310961	310971	302113 302114 328001 328003 328005 328007 328009	772126		
300851		302011	772050		
300923		302034	772042		
300931		302022	772042		
300401 300451	300432	302020	772052		
300601 300741 300771		302020	772054		
300891		302038	772054		
300941	300945	302011	772052		
301055		302001 302002	772052		
301101		302017	771962		
301115		302001 302002	772052		
300671 300581 300691		302201 302204 302205	772336		
300621 300626 300625		302201 302202 302203	772336		

## ASSEMBLY TABLES

### TINES, DISCS, HUBS, SCRAPER ARMS, SCRAPER

The tine DX-SX	accept the disc	with hub	and can mount the scraper arm DX-SX	with scraper DX-SX
317201 - 317211	318101 318111 318121	318001	NO	NO
317021 - 317031	318101 318111	318001	NO	NO
317025 - 317035	318201 318202	318001	NO	NO
317301 - 317311	318101	318001	318301 - 318311	318601 - 318611
317301 - 317311	318111	318001	318301 - 318311	318621 - 318631
317061 - 317071	318111 318121	318001	NO	NO
317065 - 317075	318203 318204	318001	NO	NO
317401 - 317411	318111	318001	318401 - 318411	318621 - 318631
317401 - 317411	318121	318001	318401 - 318411	318641 - 318651
317421 - 317431	318111	318001	318401 - 318411	318621 - 318631
317421 - 317431	318121	318001	318401 - 318411	318641 - 318651
317501 - 317511	318131	318011	318501 - 318511	318621 - 318631
317501 - 317511	318141	318011	318501 - 318511	318641 - 318651
317521 - 317531	318131	318011	318501 - 318511	318621 - 318631
317521 - 317531	318141	318011	318501 - 318511	318641 - 318651

## ASSEMBLY TABLES

### TINES, HELPERS, POINTS, BOLTS

The tine	can be fitted with the helper	and accept the following point	with the bolt		
301221		305105 305111 305112	771972		
301801 301831		302801 302802 302804 302805 302806 302832 302833 302834 302852 302853 302854	772115		
301851		302803 302822 302823 302824 302842 302843 302844	772112		
301521 301561 301541 301581		302801 302802 302804 302805 302806 302832 302833 302834 302852 302853 302854	772116		
301901 301921 301981 301941 301961		305301	771974		
301451	301473	305301	771974		
301401	301423	305301	771974		
304501/11		307010	771964		

## ASSEMBLY TABLES

TINES, HELPERS, POINTS, BOLTS					
The tine	can be fitted with the helper	and accept the following point	with the bolt		
304541/51 304561/71		305101	771973		
304581/91 304601/11		305101	771974		
304541/51 304561/71		305105 305111 305112	771972		
304581/91 304601/11		305105 305111 305112	771973		
304641/51		305103 305002 305005 305006	771975		
304661/71		305103 305002 305005 305006	771976		
304021 304041 304051		305001 305002 305005 305006	771972		
304031 304061 304081 304091		305001 305002 305005 305006	771973		
306001		307001 307010 307011 307012 307013	771961		
306011		307001 307010 307011 307012 307013	771962		
306021		307001 307010 307011 307012 307013	771962+771964		
306031		307001 307010 307011 307012 307013	771962+771965		

## ASSEMBLY TABLES

### POINTS, TINES, BOLTS

The point	can be fitted on the tine	with the bolt			
302001 302002	300001 300101 300151 301051 301111	772052			
302004	300001 300101 300151	772052			
302011	300851	772050			
302023	300851	772042			
302034	300923	772042			
302022	300931	772042			
302012	300701	772052			
302013	300501	772052			
302014	300551 300561 300571	772052			
302014	300521	772054			
302011	300941	772052			
302017	301101	771962			
302020	300001 300101 300151 300401 300451 300601 300741 300771	772052			
302038	300891	772054			
302005 302006 302007 302008 302009 302010 302025 302026 302027 302028 302029 302030	300001 300101 300151	772052			

## ASSEMBLY TABLES

### POINTS, TINES, BOLTS

The point	can be fitted on the tine	with the bolt			
302019 302007 302008 302009 302010 302027 302028 302029 302030	300801	772054			
302042 302311 302312 302313 302314 302424 302425 302426 302427	310831	772054			
302201 302204 302205	300671 300581 300691	7712336			
302201 302202 302203	300621	772336			
302043 302299 302300 302301 302302 302412 302413 302414 302415	300721	772040			
302802 302806 302853 302854	310901 310921	772125			
302802 302806 302853 302854	310941 310961	772126			
305105 305111 305112	301221	771972			



## ASSEMBLY TABLES

### POINTS, TINES, BOLTS

The point	can be fitted on the tine	with the bolt			
302801 302802 302804 302805 302806 302832 302833 302834 302852 302853 302854	301801	772112			
302801 302802 302804 302805 302806 302832 302833 302834 302852 302853 302854	310831	772112			
302803 302822 302823 302824 302842 302843 302844	301851	772112			
302801 302802 302804 302805 302806 302832 302833 302834 302852 302853 302854	301521 301561 301541 301581	772116			
305301	301901 301921 301981 301941 301961 301451 301401	771974			

## ASSEMBLY TABLES

### POINTS, TINES, BOLTS

The point	can be fitted on the tine	with the bolt			
307010	304501/11	771964			
305101	304541/51 304561/71	771973			
305101	304581/91 304601/11	771974			
305105 305111 305112	304541/51 304561/71	771972			
305105 305111 305112	304581/91 304601/11	771973			
305103 305002 305005 305006	304641/51	771975			
305103 305002 305005 305006	304661/71	771976			
305001 305002 305005 305006	304021 304041 304051	771972			
305001 305002 305005 305006	304031 304061 304081 304091	771973			
307001 307010 307011 307012 307013	306001	771961			
307001 307010 307011 307012 307013	306011	771962			
307001 307010 307011 307012 307013	306021	771962+771964			
307001 307010 307011 307012 307013	306031	771962+771965			

## ASSEMBLY TABLES

### HELPERS, TINES

The helper	can be fitted with the tine				
300052	300001				
300054	300101				
300056	300151				
	300701				
300432	300401				
	300451				
	300551				
	300561				
	300571				
300821	300801				
	310831				
300731	300721				
310911	310901				
310931	310921				
310951	310941				
310971	310961				
300945	300941				
301055	301051				
301115	301111				
301423	301401				
301473	301451				

**Алматы** (7273)495-231  
**Ангарск** (3955)42-70-56  
**Архангельск** (8182)63-90-72  
**Астрахань** (8512)99-46-04  
**Барнаул** (3852)73-04-42  
**Белгород** (4735)40-23-142  
**Благовещенск** (4162)35-142-07  
**Брянск** (4232)59-03-52  
**Владивосток** (423)249-42-31  
**Владикавказ** (8672)42-90-42  
**Владимир** (4935) 49-43-18  
**Волгоград** (844)278-03-42  
**Вологда** (8172)26-41-59  
**Воронеж** (473)204-51-73  
**Екатеринбург** (343)384-55-142

**Ижевск** (3412)26-03-58  
**Иваново** (4932)77-34-06  
**Иркутск** (395)279-98-46  
**Казань** (843)206-01-42  
**Калининград** (4012)72-03-81  
**Калуга** (4242)92-23-67  
**Кемерово** (3842)65-04-62  
**Киров** (8332)68-02-04  
**Коломна** (4966)23-41-49  
**Кострома** (4942)77-07-42  
**Краснодар** (861)203-40-90  
**Красноярск** (391)204-63-61  
**Курск** (4712)77-13-04  
**Курган** (4352)50-90-47  
**Липецк** (4742)52-20-81

**Магнитогорск** (4219)55-03-13  
**Москва** (495)268-04-70  
**Мурманск** (8152)59-142-93  
**Набережные Челны** (8552)20-53-41  
**Нижний Новгород** (831)429-08-12  
**Новокузнецк** (3843)20-46-81  
**Ноябрьск** (3496)41-32-12  
**Новосибирск** (383)357-86-73  
**Ноябрьск** (3496)41-32-12  
**Омск** (3812)21-46-40  
**Орел** (4262)44-53-42  
**Оренбург** (4232)37-68-04  
**Пенза** (8412)35-31-16  
**Петрозаводск** (8142)55-98-37  
**Псков** (8112)59-10-37

**Пермь** (342)205-81-47  
**Ростов-на-Дону** (863)308-18-15  
**Рязань** (4912)46-61-142  
**Самара** (846)206-03-16  
**Саранск** (8342)35-96-24  
**Санкт-Петербург** (812)309-46-40  
**Саратов** (845)249-38-78  
**Севастополь** (8692)35-31-93  
**Симферополь** (3652)67-13-56  
**Смоленск** (4212)29-41-42  
**Сочи** (862)242-72-31  
**Ставрополь** (8652)20-65-13  
**Сыктывкар** (8212)42-95-17  
**Сургут** (3462)77-98-42  
**Тамбов** (4752)50-40-97

**Тверь** (4352)63-31-42  
**Тольяти** (8435)63-91-07  
**Томск** (3835)98-41-53  
**Тула** (4272)33-79-87  
**Тюмень** (3452)66-21-18  
**Улан-Удэ** (3012)59-97-51  
**Ульяновск** (8435)24-23-59  
**Уфа** (347)359-42-12  
**Хабаровск** (4212)92-98-04  
**Чебоксары** (8435)42-53-07  
**Челябинск** (421)202-03-61  
**Череповец** (8202)49-02-142  
**Чита** (3035)38-34-83  
**Якутск** (4112)23-90-97  
**Ярославль** (4422)69-52-93

Киргизия (996)312-96-26-47

Россия (495)268-04-70

Казахстан (772)734-952-31